

The background of the entire page is a blurred, monochromatic image of chess pieces on a board. The pieces are in various positions, some in the foreground and others in the background, creating a sense of depth. The overall tone is light blue and grey.

HPS Outlook

Illawarra Shoalhaven Region Part 2

SEPTEMBER 2021



HEALTH PROJECT SERVICES

Research • Analysis • Strategy • Delivery

Illawarra Shoalhaven Region Part 2

The Illawarra Shoalhaven Region Outlook Part 2 will focus on the remaining three themes will form the framework for the Illawarra Shoalhaven Regional Plan 2041 which include:

- Theme 1: A productive and innovative region (provided in Illawarra Shoalhaven Region Outlook Part 1 report August 2021)
- Theme 2: A sustainable and resilient region
- Theme 3: A region that values its people and places
- Theme 4: A smart and connected region

The vision map for the Illawarra Shoalhaven region is shown in **Figure 1**.

If you have would like to read Illawarra Shoalhaven Region Outlook Part 1 report August 2021 please click here to read.

[download report](#)



Source: NSW Department of Planning, Industry & Environment, Draft Illawarra Shoalhaven Region Plan 2041

Figure 1: Vision map for Illawarra Shoalhaven



Illawarra Shoalhaven Region Part 2

Regional Plan Theme 2 – A sustainable and resilient region

There are seven objectives identified for this theme as stated below:

Objective 11 Protect important environmental assets

Objective 12 Build resilient places and communities

Objective 13 Increase urban tree canopy

Objective 14 Enhance and connect parks, open spaces and bushland with walking and cycling paths

Objective 15 Plan for a Net Zero region by 2050

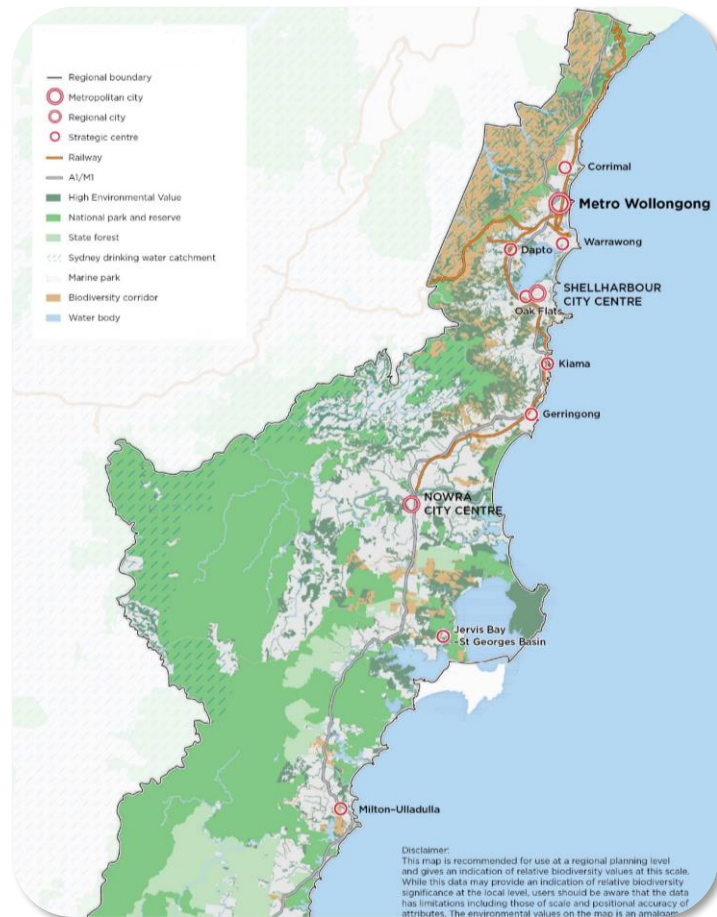
Objective 16 Support the development of a circular economy

Objective 17 Secure water resources

According to the plan 43% of the Illawarra Shoalhaven region has high environmental value or forms part of a biodiversity corridor. The NSW Government has committed over \$45 million to help the region recovery from the impact of the 2019-20 bushfires.

Objective 16: Support the development of a circular economy

The goal of *Objective 16 Support the development of a circular economy* is based on the concept of recycling, reusing and repairing waste to generate opportunities for new industries. This may lead to a boost in job growth and could attract people to the region.



Source: NSW Department of Planning, Industry & Environment, Draft Illawarra Shoalhaven Region Plan 2041

Figure 2: Environmental Values for Illawarra Shoalhaven



Illawarra Shoalhaven Region Part 2

Regional Plan Theme 3 – A region that values its people and places

There are seven objectives identified for this theme as stated below:

Objective 18 Provide housing supply in the right locations

Objective 19 Deliver housing that is more diverse and affordable

Objective 20 Establish a shared vision for the future of Bombo Quarry lands

Objective 21 Respond to the changing needs of local neighbourhoods

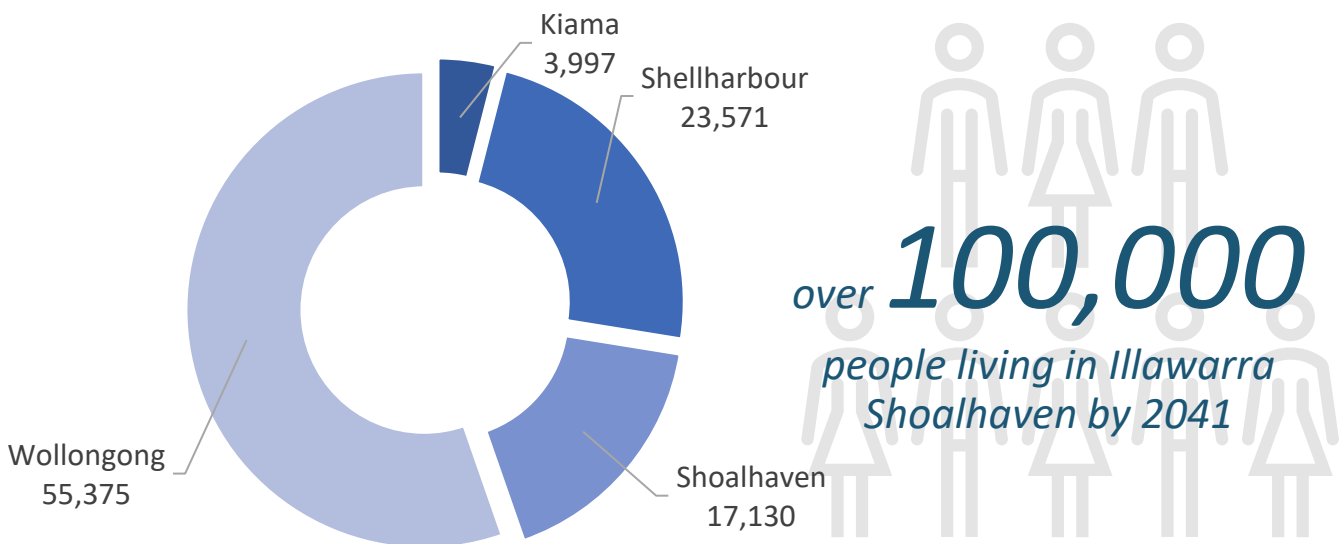
Objective 22 Embrace and respect the region's local character

Objective 23 Celebrate, conserve and reuse cultural heritage

Objective 24 Support major events, public art and cultural activities

Over the next two decades the Government anticipate the population of Illawarra Shoalhaven will record an ageing population, a declining average household size and growing demand for tourism-related housing.

The plan forecasts the region will need an additional 58,000 homes by 2041 to cater for population growth. New residential growth areas include West Lake Illawarra and Nowra-Bomaderry.



Source: NSW Department of Planning, Industry & Environment, Draft Illawarra Shoalhaven Region Plan 2041

Figure 3: Estimated population growth by area



Illawarra Shoalhaven Region Part 2

Objective 18: Provide housing supply in the right locations

The plan identifies new housing supply will be primarily sourced from West Lake Illawarra and Nowra-Bomaderry regions. Established areas comprising Wollongong, Shellharbour and Shoalhaven have adequate levels of housing to meet future demands.

The West Lake Illawarra Growth Area has been earmarked for 28,000 new residential dwellings. The urban release areas of Tallawarra, West Dapto and Calderwood will be the focus of new communities in the region. In comparison the Nowra-Bomaderry region can provide up to 9,600 additional residential dwellings to cater for population growth. The majority of supply will be located in the Moss Vale Road precincts.

Smaller urban release areas include Redgum Ridge, Shell Heights and Bayswood (Vincentia).

Strategic Centres with capacity for additional housing will be prioritised such as Corrimal, Milton-Ulladulla, Kiama, Dapto and Gerrigong.

The plan also recognises the importance of infrastructure planning to boost and support housing supply across the region. This will focus on improving connectivity, increasing major road network capacity and upgrading health facilities and services at Nowra, Shellharbour and Wollongong Hospitals.

Demand for health-related services will likely increase as new residential communities are established over the next two decades. Opportunities close to urban release areas and redevelopment areas in established areas may have potential for growth.



Source: NSW Department of Planning, Industry & Environment, Draft Illawarra Shoalhaven Region Plan 2041

Figure 3: West Lake Illawarra Growth Area



Source: NSW Department of Planning, Industry & Environment, Draft Illawarra Shoalhaven Region Plan 2041

Figure 4: Nowra Bomaderry Growth Area



Illawarra Shoalhaven Region Part 2

Objective 19: Deliver housing that is more diverse and affordable

The Plan stipulates the main focus will be:

- Provide a diversity of housing choices and dwelling sizes
- Increase the supply of affordable housing
- Renew and increase social housing.

Over the next 20 years, the Plan forecasts couples without children and single person households to grow by 41% and 45% respectively each. Furthermore, population projections expect as a minimum 57,000 additional people aged 55 years old and over. This changing demographic profile will generate demand for smaller and affordable households across the region.

The Government intends to increase access to social housing throughout the Illawarra Shoalhaven. There are two major projects in the pipeline to supply 100 new social and affordable housing (townhouses and apartments) at Robert Street, Corrimal and Crown Street, Wollongong.

Objective 20: Establish a shared vision for the future of Bombo Quarry lands

Bombo Quarry (114 hectare site) could be repurposed to provide the region with new housing, employment lands and recreational areas. The NSW Government will collaborate with Kiama Council and community to assess the potential opportunity.

Objective 21: Respond to the changing needs of local neighbourhoods

The Plan recognises a need to re-evaluate the role and functions of local neighbourhoods, particularly after the impact of COVID-19 which saw people working from home.



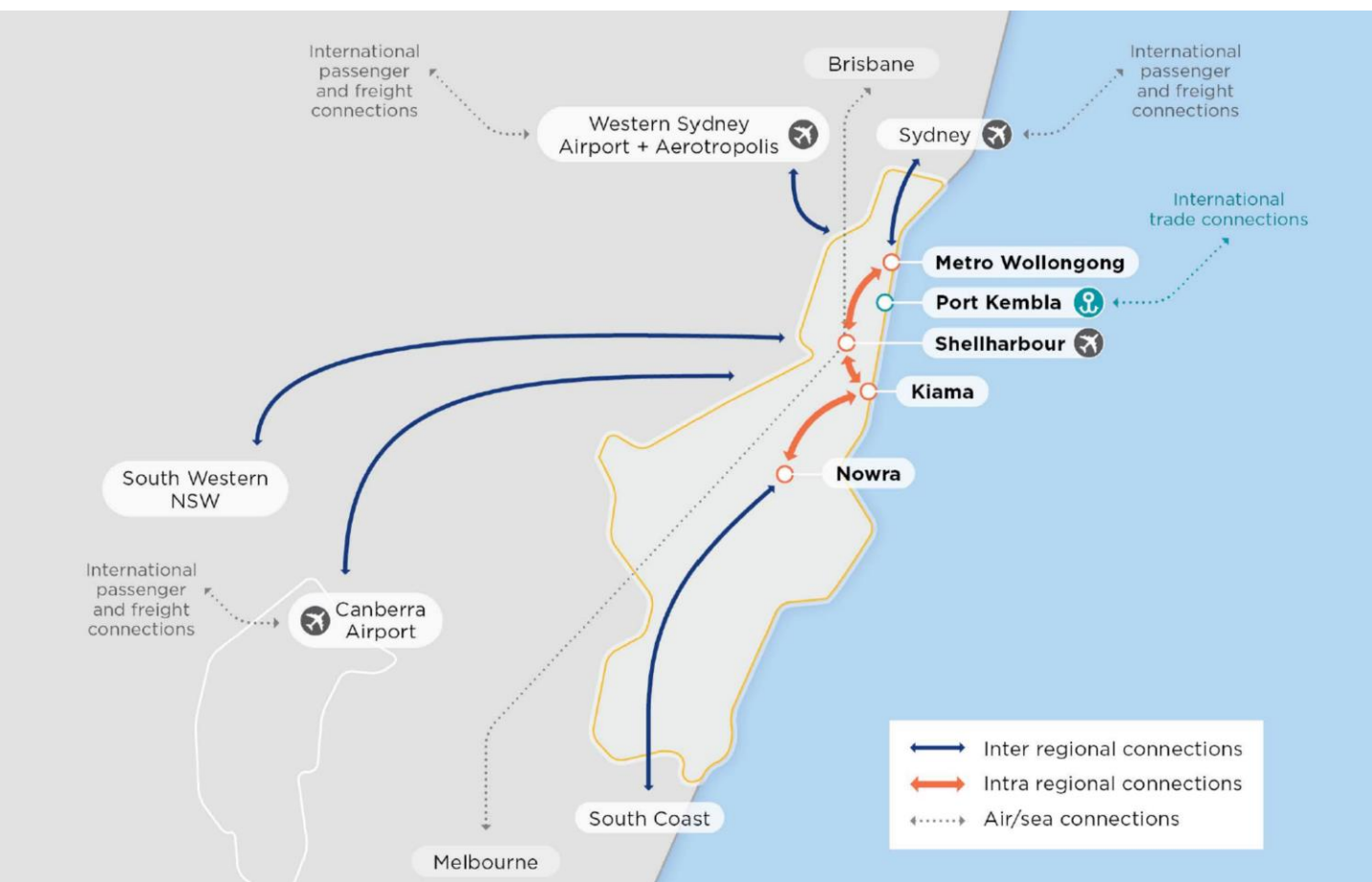


Illawarra Shoalhaven Region Part 2

Regional Plan Theme 4 – A smart and connect region

There are six objectives identified for this theme as stated below:

- | | |
|---------------------|---|
| Objective 25 | Collaborate to leverage opportunities from Western Sydney's growth |
| Objective 26 | Create faster rail connections between Greater Sydney, Wollongong and Nowra |
| Objective 27 | Protect major freight networks |
| Objective 28 | Create connected and accessible walking and cycling networks |
| Objective 29 | Utilise smart infrastructure to drive resilience, prosperity and vibrant places |
| Objective 30 | Prepare for mobility changes that improve connectivity and sustainability |



Source: NSW Department of Planning, Industry & Environment, Draft Illawarra Shoalhaven Region Plan 2041

Figure 5: Illawarra Shoalhaven connectivity map

www.healthprojectservices.com.au

*If you would like more information about this newsletter or
need to discuss your health project, please contact:*

Dean Crozier dean.c@healthprojectservices.com.au

DISCLAIMER: ©2021, Health Project Services. All rights reserved. In preparing this report Health Project Services, and its employees and contractors, have used information from publicly available material believed reliable and we have used reasonable endeavours to ensure its accuracy. However, we make no guarantee or accept responsibility for errors or misstatements. We have not independently verified the reliability, accuracy or completeness of the information. Projections and estimates are provided as opinions only. You should seek independent financial and legal advice and make your own assessment.