

HPS Outlook

Central West & Orana Region Part 1

February 2022



HEALTH PROJECT SERVICES

Research • Analysis • Strategy • Delivery

Central West & Orana Region Part 1

By 2036, the vision for the Central West and Orana region includes creating more economic diversity and maximising opportunities across the region. The NSW Government has identified two parts of this region being:

1. Connectivity to major metropolitan cities on the east coast; and
2. Maximise benefits of freight and logistics infrastructure to improve productivity to domestic and worldwide markets.

The government have created four goals in their Central West and Orana Regional Plan 2036.

Goal 1: The most diverse regional economy in NSW

Goal 2: A stronger healthier environment and diverse heritage.

Goal 3: Quality freight transport and infrastructure networks

Goal 4: Dynamic vibrant and healthy communities.



Central West and Orana Region comprises the Local Government Areas (LGA's) of Bathurst Regional, Blayney, Bogan, Cabonne, Coonamble, Cowra, Dubbo Regional, Forbes, Gulgandra, Lachlan, Lithgow, Mid-Western Regional, Narrorwine, Oberon, Orange, Parkes, Warren, Warrumbungle and Weddin as shown in **Figure 1**.

Figure 1: Two parts of Central West and Orana Region by LGA

Source: NSW Department of Planning, Industry & Environment, Central West and Orana Regional Plan 2036

HPS help you make informed decisions at every stage of your healthcare project.



Central West & Orana Region Part 1

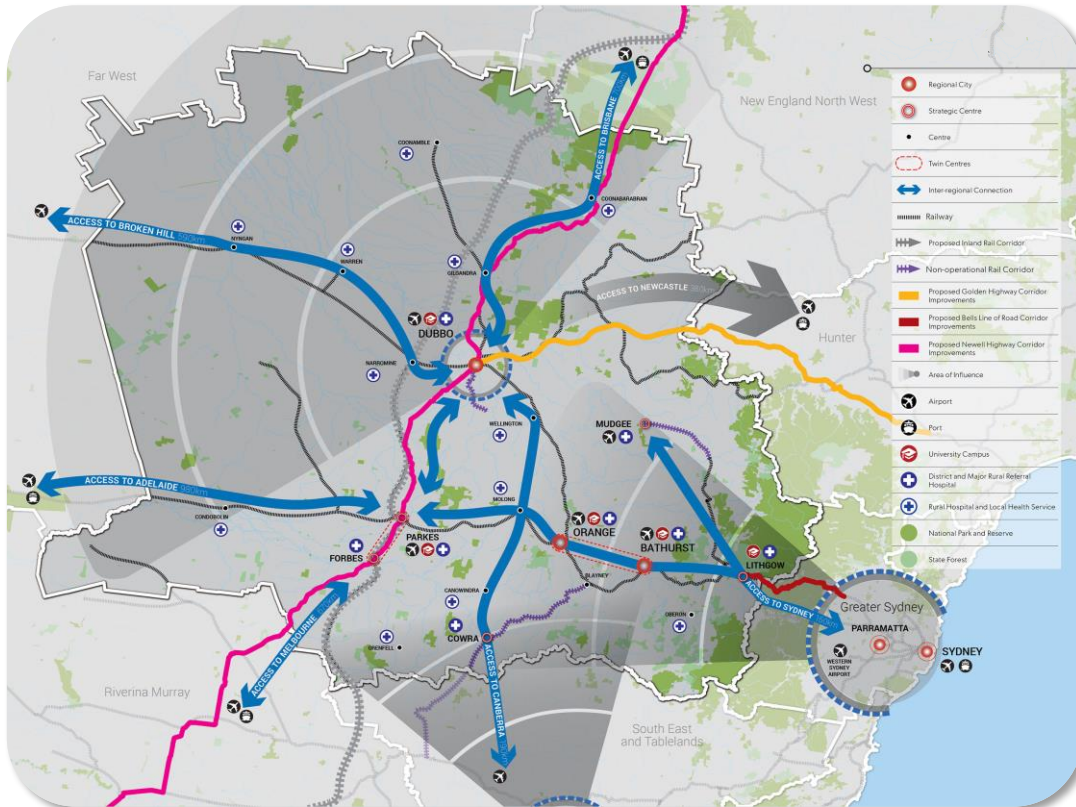


Figure 2: Central West and Orana 2036

Source: NSW Department of Planning, Industry & Environment, Central West and Orana Regional Plan 2036

The vision map for the Central West and Orana region is shown in **Figure 2**. The government anticipate the Central West region to take advantage of the connection to Sydney including the new Western Sydney Airport and increased benefits from Canberra's growing global connections.

The Orana region will continue to build on agricultural productivity with an emphasis on improving infrastructure to ensure efficient supply chains to domestic and global markets.

To ensure a diversified and thriving economy there are five factors which the NSW Government have identified as follows:



Diversified Economy



Central West & Orana Region Part 1

Transport and Logistics



Improving interstate and national connections for manufacturing, transporting livestock and agricultural produce industries. This will rely on freight connections, major road networks and rail corridors within the region.

Agribusiness and Value-adding



The region offers a broad agriculture industry which is a hub for food processing, packaging and associated industries. The Plan will use this as leverage to ensure the maximum benefits and opportunities are realised.

Tourism



The Central West and Orana region is a weekend destination trip for visitors predominately from Sydney and Canberra. The recent impact of COVID-19 has seen domestic travel increase as international travel has yet to return to pre-pandemic levels.

Mining and Renewables



Coal mining (Lithgow and Mudgee), gold, silver, copper and rare earth mining (Dubbo) is across the region. Renewable energy in the Central West is predominately focused on wind energy while Orana has mainly solar energy.

Growing Service Sector



The Plan foresees a growing need for health, aged care and education services to cater for the changing demographic profile as population rises through the region. Existing health facilities are identified in Dubbo, Orange, Bathurst, Mudgee and Parkes.



Central West & Orana Region Part 1

The NSW government have reviewed each LGA and identified the top three economic opportunities. This is shown below and highlights the importance of Agribusiness, Transport and Logistics and Tourism across the region.



Figure 3: Top three economic opportunities per LGA

Source: NSW Department of Planning, Industry & Environment, Central West and Orana Regional Plan 2036



Central West & Orana Region Part 1

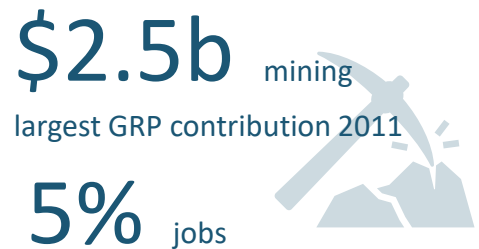
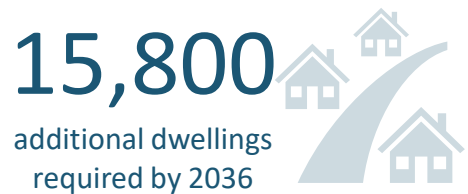
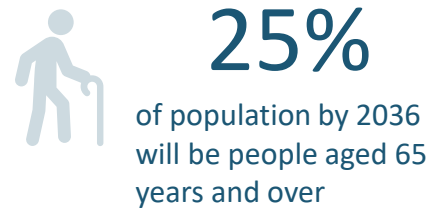
According to the Plan, the population of Central West and Orana region is forecast to reach over 300,000 people, representing an increase of 23,450 people by 2036. The majority of population is expected to be settled into major regional cities of Bathurst, Orange and Dubbo. With additional support from strategic centres including Lithgow, Mudgee and Cowra, Parkes and Forbes.

The population growth is expected to generate a need for an additional 15,800 dwellings by 2036 to reach a total of 147,950 dwellings across the region.

By 2036, one in four residents will be aged 65 years and over indicating a greater need for health-related services and aged care for this age group.

The Plan identified the following state government funded investments into the Central West and Orana region:

- \$241.3 million for the Dubbo Base Hospital redevelopment;
- \$60 million to upgrade Mudgee Hospital;
- \$140 million towards construction of a third bridge crossing at Dubbo;
- \$28 million towards the Bells Line of Road upgrade;
- \$21 million for a five-stage potable water supply pipeline from Orange to Blayney and Carcoar Dam;
- \$17 million for a potable water pipeline from Orange to Molong Dam, and from Molong to Cumnock and Yeoval;
- \$2.5 million for the new Molong Ambulance Station; and
- Establishment of Multi-Purpose Services at Molong, Coolah and Rylston.



\$1.3b

agriculture, forestry & fishing
second largest GRP contribution
2011



285,500

people as at 2016

308,950

people projected by 2036

Source: NSW Department of Planning, Industry & Environment, Central West and Orana Regional Plan 2036



Central West & Orana Region Part 1

Regional Plan Goal 1 – The most diverse regional economy in NSW

Historically agricultural, manufacturing and mining sectors are the largest economic contributors in the region. Looking ahead, the NSW government have earmarked new opportunities to expand health, education and tourism industries. The Plan also identifies emerging sectors such as food production and packaging, niche tourism, aged care and related services and renewable energy.

There are 12 directions identified for this goal as summarised.

Direction 5: Improve access to health and aged care services

Under *Direction 5* (pp. 26-27) the government has specified the following actions:

1. Establish health precincts around hospitals in regional cities and strategic centres.
2. Promote mixed-use facilities and research and accommodation precincts for the health and aged care service sectors.
3. Facilitate the development of multipurpose, flexible and adaptable health and education infrastructure.
4. Minimise the encroachment of inappropriate and incompatible land uses near existing and proposed health facilities.

The government recognises potential opportunities to broaden the range of complementary health services surrounding existing health establishments such as Dubbo, Orange, Bathurst, Mudgee and Parkes.

This will become important as the region is expected to see a rise in ageing population, which will require specialist medical services.

Direction 1	Protect the region's diverse and productive agricultural land
Direction 2	Grow the agribusiness sector and supply chains
Direction 3	Develop advanced manufacturing and food processing sectors
Direction 4	Promote and diversify regional tourism markets
Direction 5	Improve access to health and aged care services
Direction 6	Expand education and training opportunities
Direction 7	Enhance the economic self-determination of Aboriginal communities
Direction 8	Sustainably manage mineral resources
Direction 9	Increase renewable energy generation
Direction 10	Promote business and industrial activities in employment lands
Direction 11	Sustainably manage water resources for economic opportunities
Direction 12	Plan for greater land use compatibility



Central West & Orana Region Part 1

Regional Plan Goal 2 – A stronger, healthier environment and diverse heritage

The Regional Plan acknowledges natural assets across the Central West and Orana region are major drawcards to entice visitors to the area. This can lead to job growth, improved business activity for the local economy and overall region.

The government outline in the Plan their intention to ensure the natural environment is maintained and enhanced to improve the life of residents and appeal to tourists.

There are five directions identified for this goal as summarised.

Major tourism assets recognised by The Regional Plan are shown below.

Direction 13	Protect and manage environmental assets
Direction 14	Manage and conserve water resources for the environment
Direction 15	Increase resilience to natural hazards and climate change
Direction 16	Respect and protect Aboriginal heritage assets
Direction 17	Conserve and adaptively re-use heritage assets

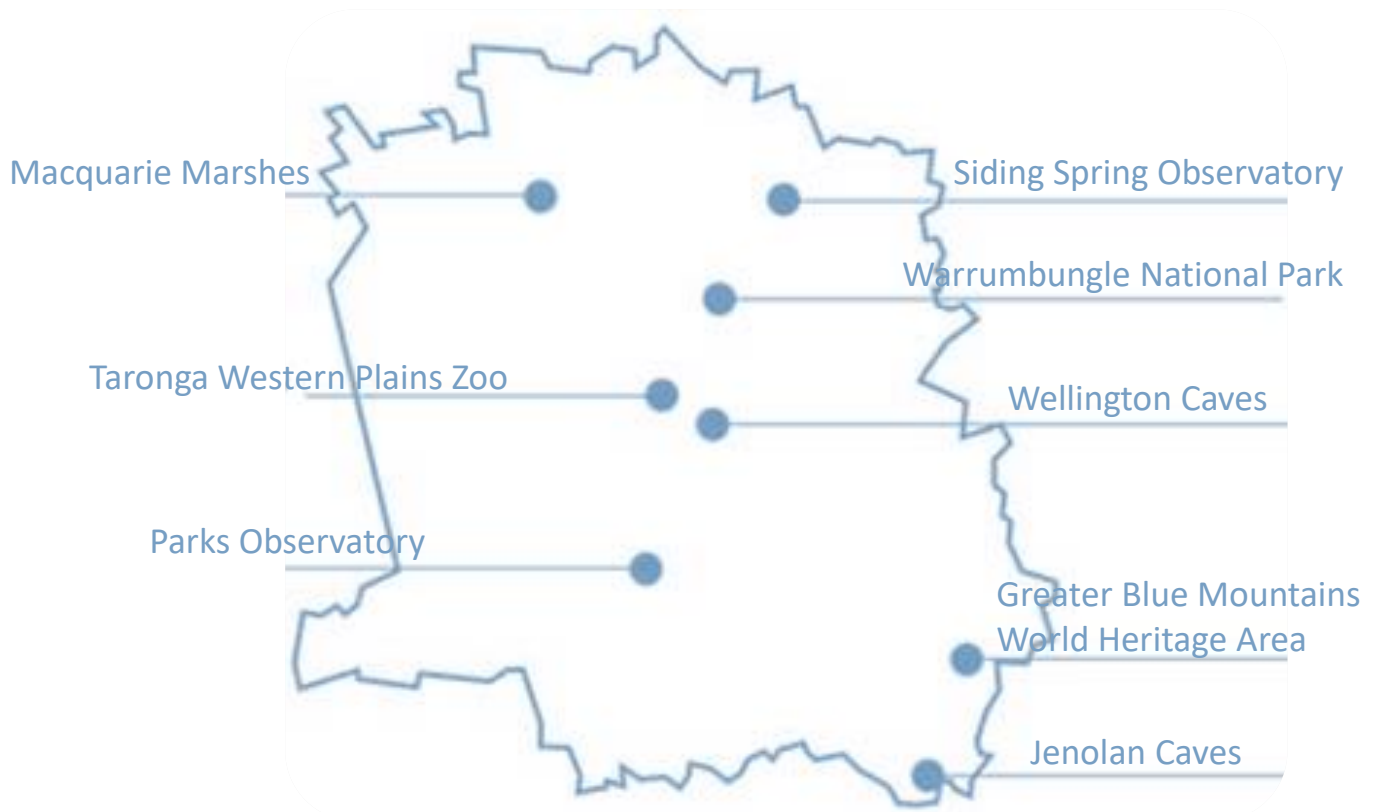


Figure 4: Environmental tourism assets

Source: NSW Department of Planning, Industry & Environment, Central West and Orana Regional Plan 2036



Central West & Orana Region Part 1

Regional Plan Goal 3 – Quality freight transport and infrastructure networks

Freight and logistics plays an integral role in the region's economy productivity and accessibility. Existing freight and transport networks provide connectivity to major metropolitan and regional cities including:

- Sydney
- Newcastle
- Wollongong
- Brisbane
- Melbourne
- Broken Hill
- Adelaide

The region has hubs located at:

- Dubbo
- Parkes
- Gilgandra

A strong transport system is critical to maintain an efficient supply chain to domestic and global markets for key exports including:

- Meat (beef and lamb)
- Grain
- Cotton
- Raw minerals and metals
- Manufactured foods, beverages and other value-add produce

The Plan highlights a need to improve efficiency of infrastructure, coupled with reducing costs to maximise benefits of increase freight activity.

The government will invest in roads, rail networks and telecommunications to generate more prospects for agribusiness, advanced and value-added manufacturing, mining and tourism sectors throughout the region.

There are four directions identified for this goal as summarised.

Direction 18	Improve freight connections to markets and global gateways
Direction 19	Enhance road and rail freight links
Direction 20	Enhance access to air travel and public transport
Direction 21	Coordinate utility infrastructure investment

Our newsletter HPS Outlook: Central West & Orana Region Part 2 will explore Goal 4 and the narratives for each LGA within the region.

If you would like more information about this article or need to discuss your health project, please contact:

Dean Crozier
dean.c@healthprojectservices.com.au

www.healthprojectservices.com.au

DISCLAIMER: ©2022, Health Project Services. All rights reserved. In preparing this report Health Project Services, and its employees and contractors, have used information from publicly available material believed reliable and we have used reasonable endeavours to ensure its accuracy. However, we make no guarantee or accept responsibility for errors or misstatements. We have not independently verified the reliability, accuracy or completeness of the information. Projections and estimates are provided as opinions only. You should seek independent financial and legal advice and make your own assessment.